

Sensobright Smart Surface technology contains our unique silicone (Magic Silicone) that changes color proportionally in response to any force or pressure applied to it. It is one of our 5 US and 100+ internationally patented technologies. Magic Silicone creates a force map on the surface based on color intensity, allowing for the analysis of force distribution. Smart Surface technology is compatible with any pliable surface, including textiles, plastics, and metals, and is resistant to fluids and magnetic interferences, allowing for versatile use under harsh conditions. Using a camera and computation unit, the force map is converted into digital data through image processing, providing valuable insights in real-time.

Sensobright Smart Surface can even function as a touchpad itself, providing touch data from the flexible layer which is added on top. This layer can be made of any flexible material, such as artificial leather, fabric, or even paper, and can be in any uniform or non-uniform shape, presenting endless possibilities for customization. Surgeons or dentists could use a Smart Surface powered touchpad while wearing gloves covered in bodily fluids. Your everyday couch, embedded with Sensobright Smart Surface, could control your TV like a remote or operate your computer like a mouse. Imagine opening your car windows or controlling its multimedia system just by touching or sliding your fingers on the armrest's leather. Sensobright Smart Surface turns this into a reality with the magic inside!



#### TECHNICAL SPECIFICATIONS

AREA: CAN BE IN ANY SHAPE  
AND DIMENSION NEEDED

FORCE MEASUREMENT  
RESOLUTION: <0.1 N

IMMUNE TO FLUIDS: YES

MULTI-MULTI TOUCH: YES | 11+

*You can convert any flexible object like artificial leather, fabric or even paper to a touchpad or a control surface.*

*are you ready to feel Better?*  **sensobright**





Sensobright Industries is an innovation driven technology company with over **145 international granted patents** in the tactile sensor field. With **extensive engineering and manufacturing capabilities**, the company is dedicated to advancing and translating its novel concepts into next-generation products and technologies for commercialization.

Prof. Dr. Utku Buyuksahin has teamed with **KOC HOLDING**, a **Global Fortune 500 Company**, to develop and commercialize **tactile sensor technology**. Sensobright Industries, a Delaware Company, was established in **2018** with the goal of developing **tactile sensors** and their production technology.

Comprising **three PhDs, one MBA and six Bachelor of Science degrees**, as well as accomplished **professors and veterans**, the Sensobright team collectively possesses over **170 years of professional experience**.

Sensobright is fully equipped to handle every aspect of the process, including **engineering, manufacturing, and after-sales support** by leveraging the **in-house assets**.

During the COVID-19 crisis, Sensobright invested more than **\$5M** in new technologies and infrastructure and is continuing to invest.

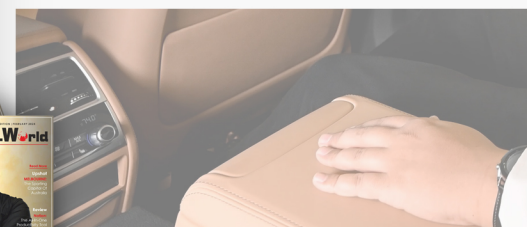
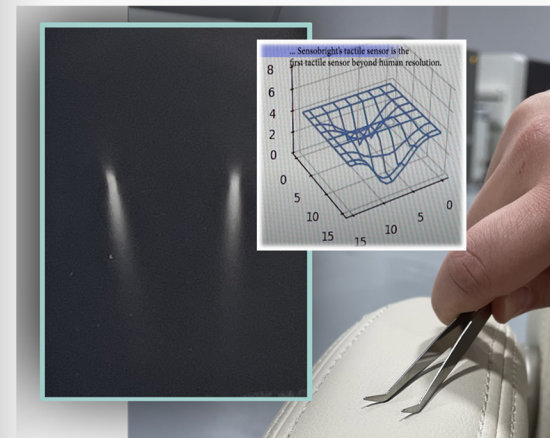


**HEADQUARTERS** 10950 SW 5th St, Ste 260-270  
Beaverton, OR, 97005, USA  
+1 971 727 8571  
[www.sensobright.com](http://www.sensobright.com)



The TEAM has  
**a TOTAL of 170+ YEARS of EXPERIENCE**  
**145+ PATENTS GRANTED**

**SENSOBRIGHT SMART SURFACE**



*are you ready to feel Better?*

